

# Chloride Readings Range Chart

---



Chlorides 500 – 800



Chlorides 800 – 1,500



Chlorides 1,500 – 2,500



Chlorides 2,500 – 5,000



Chlorides > 5,000

Point Repair Needed

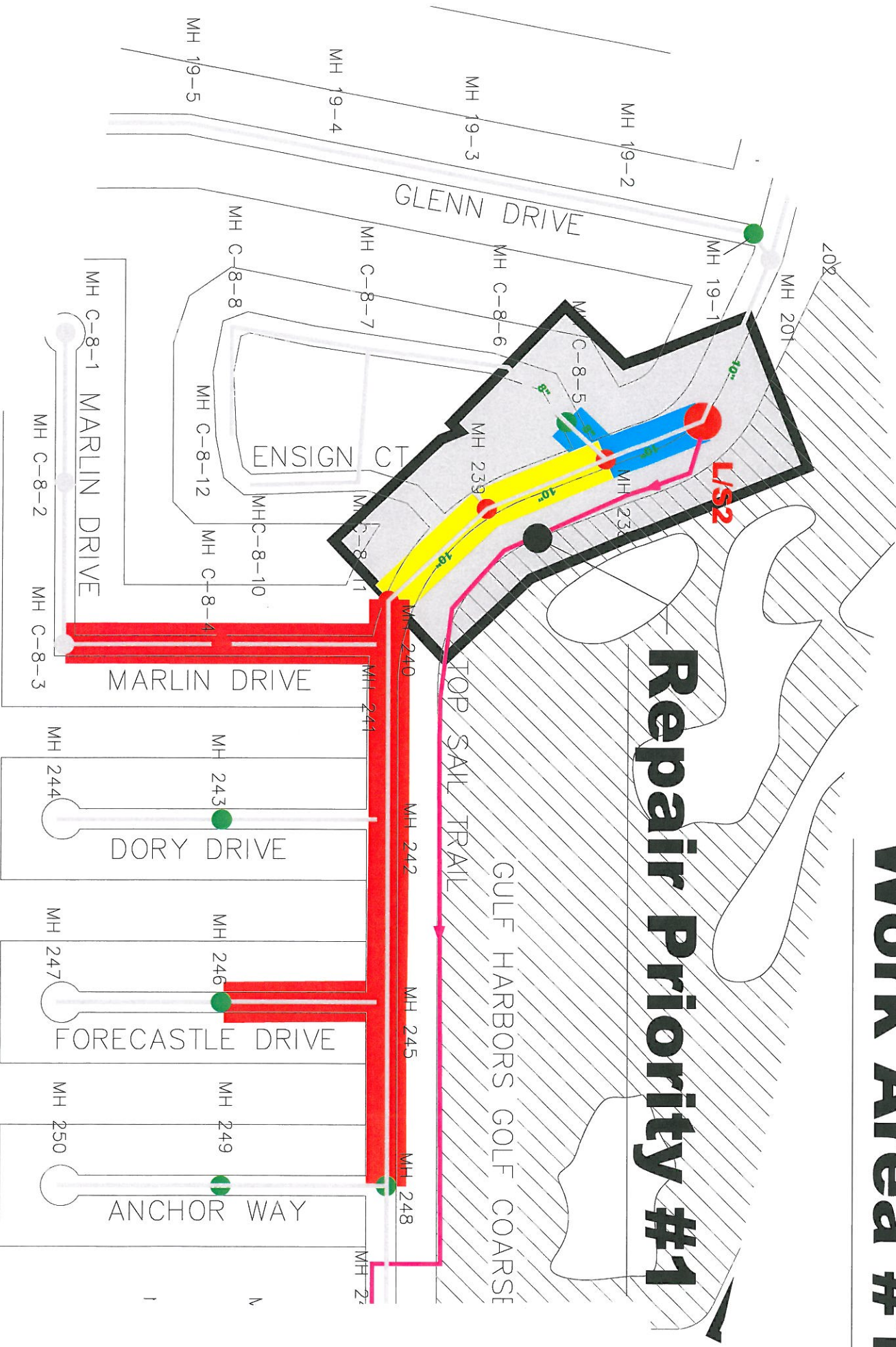
## Repair Priority #



Chloride Repair Priority

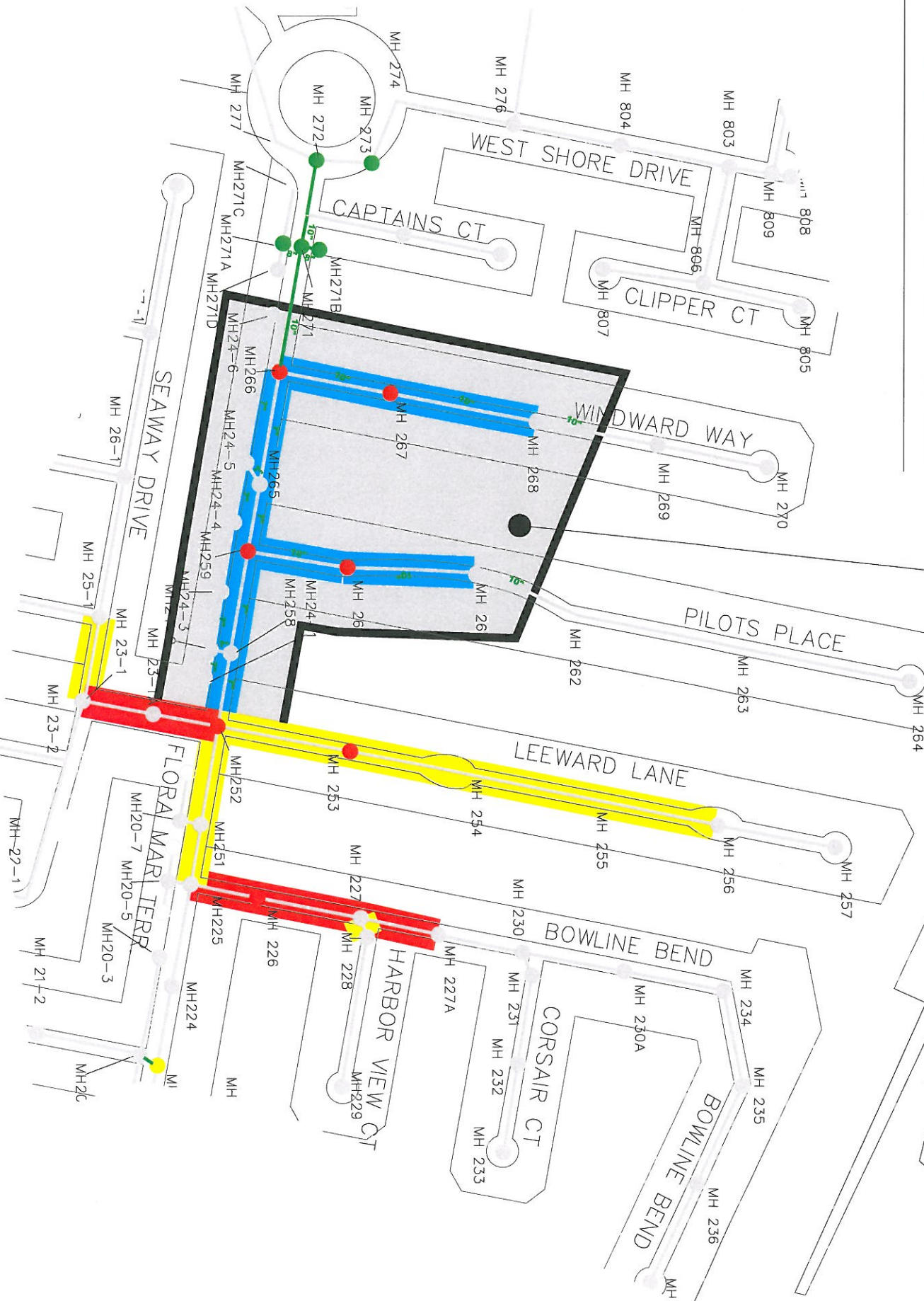
# Work Area #1

## Repair Priority #1



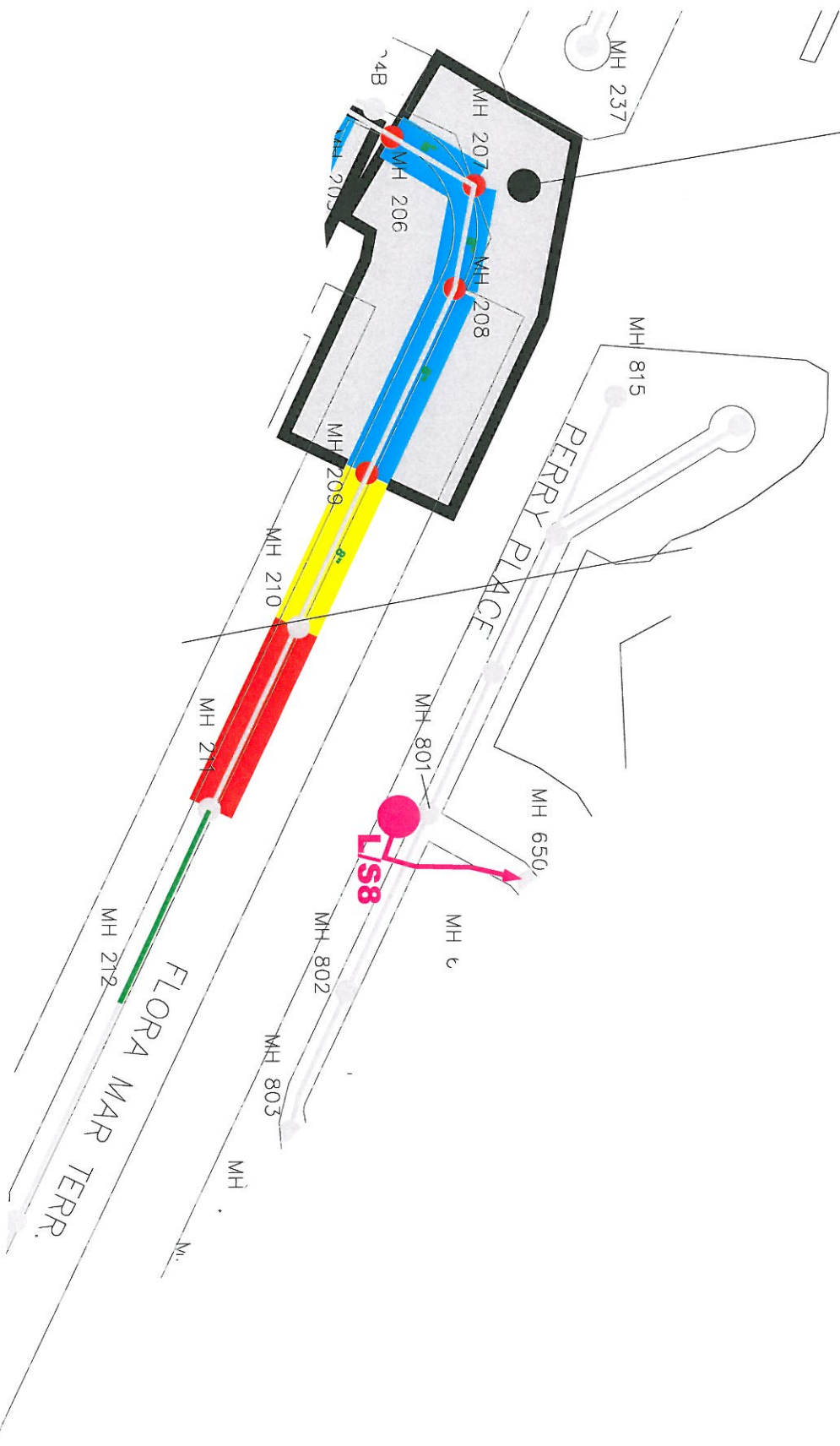
# Work Area #2

# Repair Priority #2



# Work Area #3

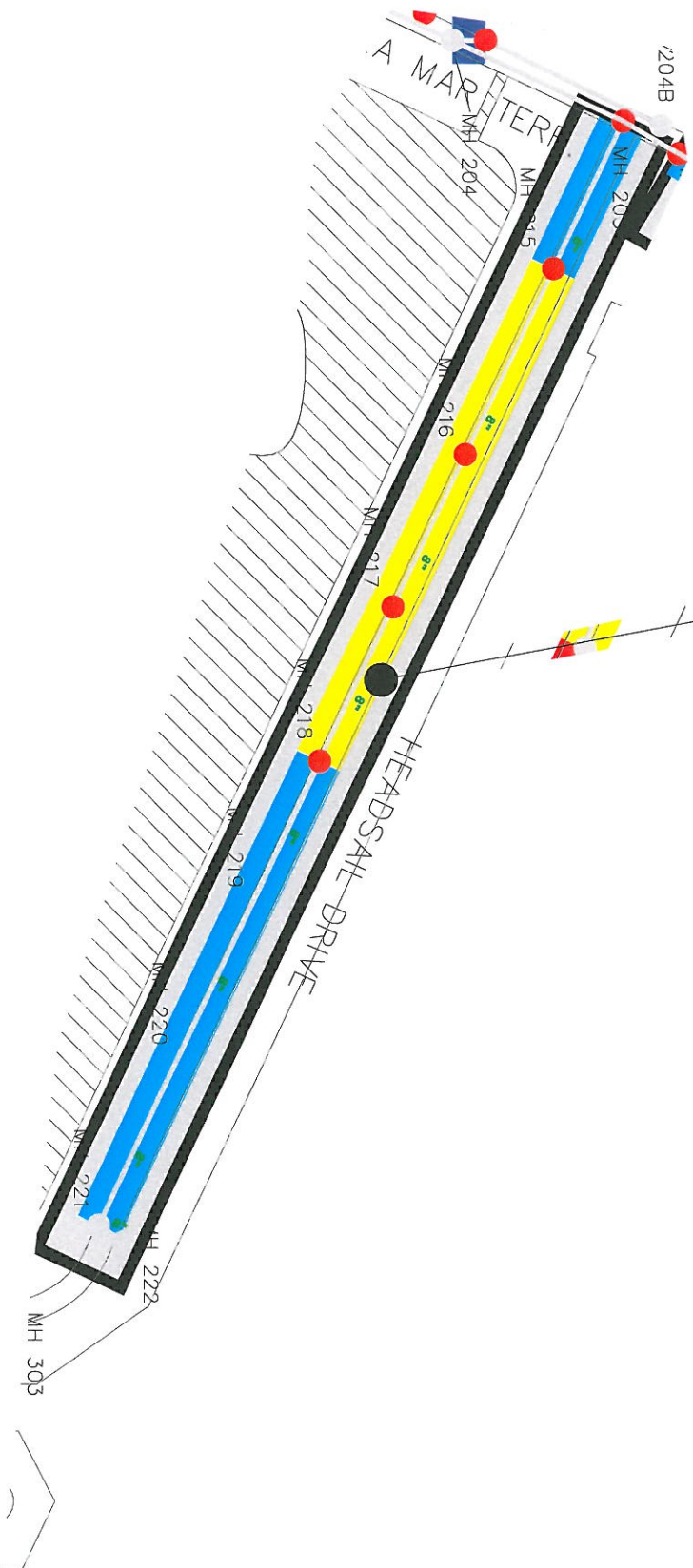
## Repair Priority #3



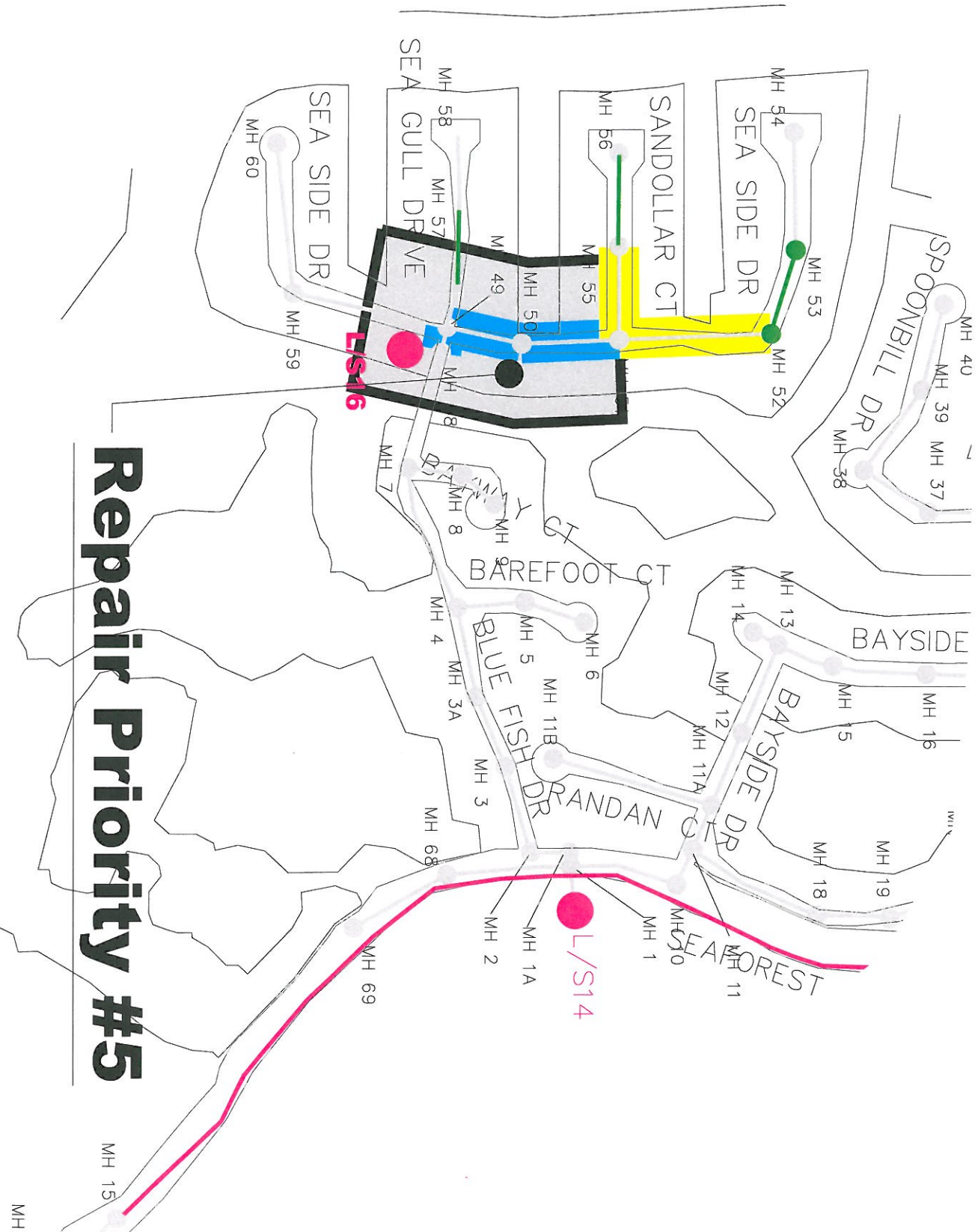
# Work Area #4

## Repair Priority #4

K11 5A7



# Work Area #5



## Repair Priority #5

MH

